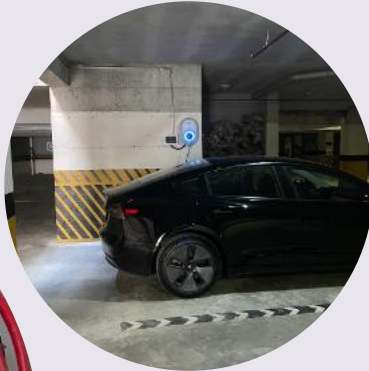


EA OTOMASYON ELEKTRİK ELEKTRONİK MÜHENDİSLİK

Alaaddinbey Mah.
640. Sk. No:2B
Nilüfer/Bursa

Contact : 0224 411 16 35
web: <https://www.eamuhendislik.com.tr/>
email : eamuhendislik@eamuhendislik.com.tr



EA OTOMASYON ELEKTRİK ELEKTRONİK MÜHENDİSLİK

Alaaddinbey Mah.
640. Sk. No:2B
Nilüfer/Bursa

Contact : 0224 411 16 35

email : eamuhendislik@eamuhendislik.com.tr
web: <https://www.eamuhendislik.com.tr/>

ABOUT US

EA Automation Engineering Electrical Electronics Industry and Trade Ltd. Co. was established in Turkey in 2002 with the objective of delivering high-quality electrical engineering and contracting services.

The company's founder, Ekrem ANAR, gained extensive industry experience between 1996 and 2002 by identifying market needs and actively participating in numerous projects. The expertise acquired during this period—particularly in project execution, delivery, planning, and performance management—has formed the cornerstone of the company's operational excellence.

Since its establishment, EA Automation Engineering has adopted a corporate approach supported by a team of highly qualified engineers and management professionals. The company provides services to both domestic and international investors and contractors, maintaining a strong commitment to quality, reliability, and professional responsibility.

Over time, EA Automation Engineering has expanded its scope of services beyond electrical contracting to offer comprehensive engineering solutions, including:

- Project design and consultancy
- High-voltage transformer substations
- Energy transmission line installations
- Industrial power installations (cabling systems, cable trays, busbar systems, lighting, socket installations, and machine power supply systems)
- Low-current systems (telecommunication, data infrastructure, CCTV, public address systems, fire detection and alarm systems, and building automation)
- Grounding and lightning protection systems
- Low-voltage distribution and power factor correction (compensation) panel assembly
- Operation and maintenance responsibility for high-voltage facilities
- Industrial automation solutions
- Maintenance and repair services
- Laser cutting applications
- LED lighting systems
- Renewable energy solutions, including wind and solar power plants

With its integrated service approach, strong technical infrastructure, and commitment to excellence, EA Automation Engineering has positioned itself among the most preferred and trusted companies in the sector.

VISION

To establish ourselves as a leading and preferred partner for qualified investors and contractors in both domestic and international markets, by delivering excellence in the electrical and renewable energy sectors through advanced expertise in planning, execution, and performance management, supported by a highly committed and quality-driven organization.

MISSION

To consistently meet and exceed our clients' expectations in the electrical and renewable energy sectors by delivering projects on time, within scope, and to the highest standards of quality.

To provide optimized, innovative, and sustainable engineering solutions through our highly skilled and experienced team.

To cultivate a dynamic, inspiring, and rewarding work environment that attracts and retains top talent while fostering continuous professional development.

To create long-term value by growing in collaboration with our stakeholders and building enduring partnerships.

To act as a trusted and reputable solution partner, guided by our commitment to integrity, transparency, respect for people and the environment, and a strong focus on quality and solution-oriented execution.

Quality

In today's global world, the first step towards achieving universal standards is to adopt a strong quality mindset and ensure the continuity of quality practices. EA Automation Engineering operates with personnel who embrace this understanding in delivering its services. Quality is a systematic approach in the pursuit of excellence, and it is always our top priority in the services we provide to our clients. "Quality is our strategy for overcoming challenges and ensuring our sustainability. Efficiency is its outcome."

Reliability and Integrity

Trust plays a vital role in corporate relationships. It is one of the fundamental pillars required to ensure sustainability and establish a healthy working environment. Trust facilitates effective cooperation with both employers and clients. Integrity is the core principle in building this trust.

Discipline

EA Automation Engineering fulfills all its commitments in compliance with local regulations and laws in all projects it undertakes, adhering strictly to applicable standards and norms. The company continues its operations with the principle of ethical business conduct, without compromising these values.

EA Automation Engineering also ensures that its employees are informed and made aware of compliance with local laws and regulations in the regions and countries where it operates.

Respect for Individuals and Cultural Values

Respect for individuals is built upon valuing the knowledge, experience, and ambition of all employees in order to improve and develop working methods. New ideas and inspiration emerge from daily operations where EA Automation Engineering employees enhance their skills. This contributes to higher quality, increased efficiency, and greater job satisfaction.

We respect the ideas of our employees without any discrimination of religion, language, or race. Likewise, we show respect for the cultural values of the countries in which we operate.

Health, Safety and Environment

In all our operations, we are committed to protecting employee health and reducing factors that may cause environmental pollution. Health, safety, and environmental management is considered an integral part of our activities and is based on the following principles:

- Compliance with applicable laws, national and international standards and regulations
- Raising awareness of all employees on health, safety, and environmental issues through continuous training
- Continuous review, development, and improvement of the system
- Implementation of high-standard health, safety, and environmental management practices
- Monitoring scientific and technological innovations and efficient use of resources
- Conducting risk assessments and taking preventive measures against hazards and accidents
- Prioritizing the health and safety of employees

EA Automation Engineering has adopted the goal of zero environmental impact, zero workplace accidents, and zero hazards in line with these principles. We take pride in having completed all our projects to date with zero accidents.

- Wind Power Plants (WPP)
- Solar Power Plants (SPP)
- Operation Responsibility in High Voltage Facilities
- Electrical Systems Design and Engineering
- Procurement and Installation of Electrical System Equipment
- MV/LV Networks and Power Distribution Systems
- Lighting Systems
- Grounding and Lightning Protection Systems
- Building Management Systems (BMS)
- Industrial Automation Systems (IAS)
- Structured Cabling and Communication Infrastructure Networks (SCS)
- Fire Detection and Automation Systems
- Instrumentation and Control Systems (ICS)
- Security Systems
- SCADA Systems
- Public Address and Clock Systems
- Satellite TV Systems (SMATV)
- Gas, Powder and Hybrid Fire Suppression Systems
- Data Center Solutions and Applications
- Special Audio, Lighting and Projection Systems
- Periodic Maintenance and Measurements
- Consultancy



CABLE PROTECTION CHANNEL

Cable protection ducts are designed for operating environments above 200°C to ensure that machine cables are not affected by high ambient temperatures. The steel sheet used in their production is grade 6112 DKP with a thickness of 2 mm. Due to high-temperature conditions, welding seams are completed by applying welding films to ensure full integrity of the joints.

In order to provide thermal insulation, rock wool with a thickness of 9 mm is placed between the steel sheets.

To ensure uninterrupted cable routing in narrow spaces such as above machinery or within suspended ceiling voids, specially designed vertical and horizontal bends are manufactured according to the required number of cable outlets.

These ducts can be designed in any required dimensions and painted in any desired color. This helps prevent visual distractions within the factory environment, preserves design integrity, and eliminates a cluttered appearance.









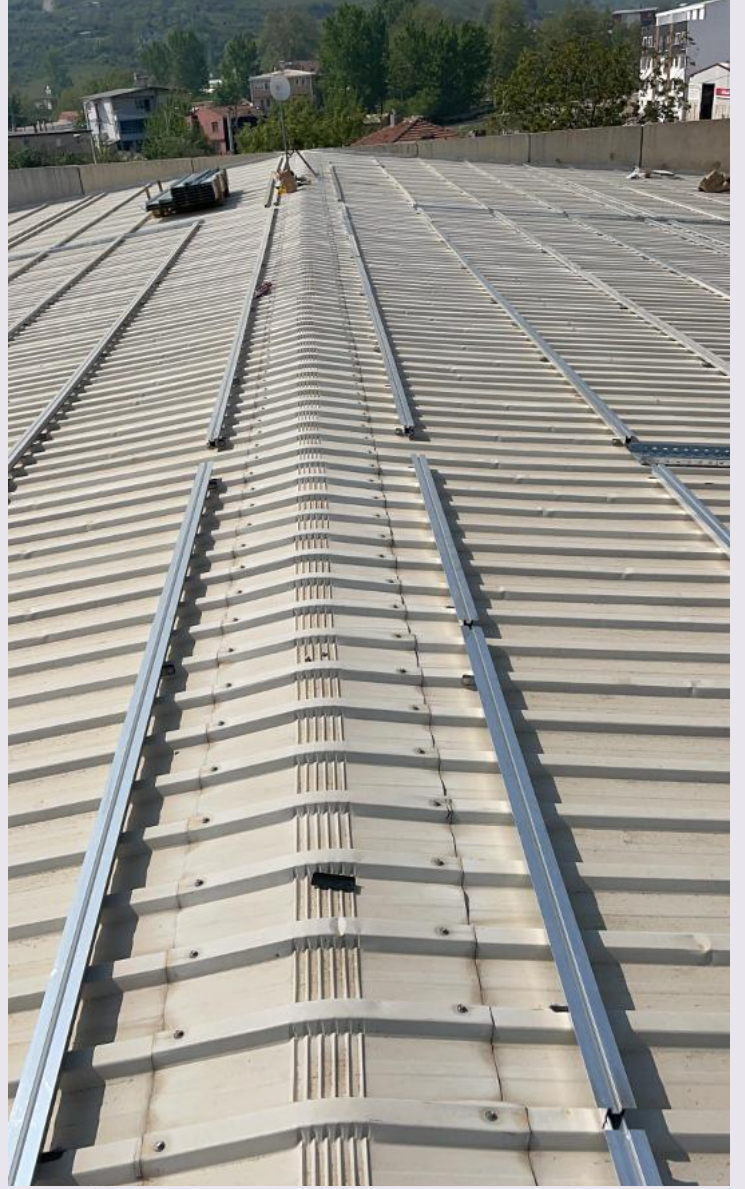






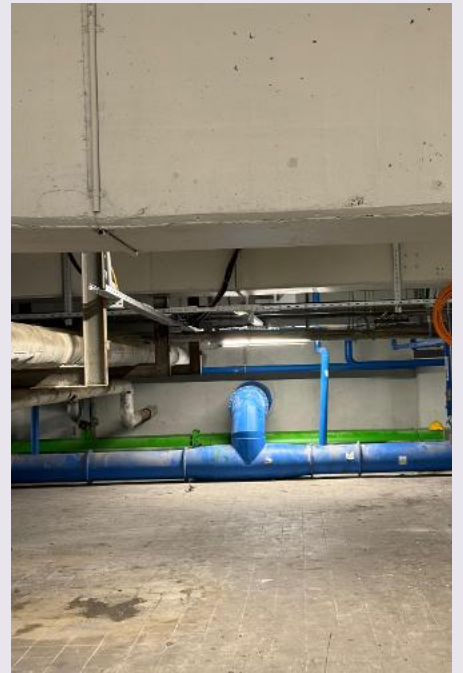
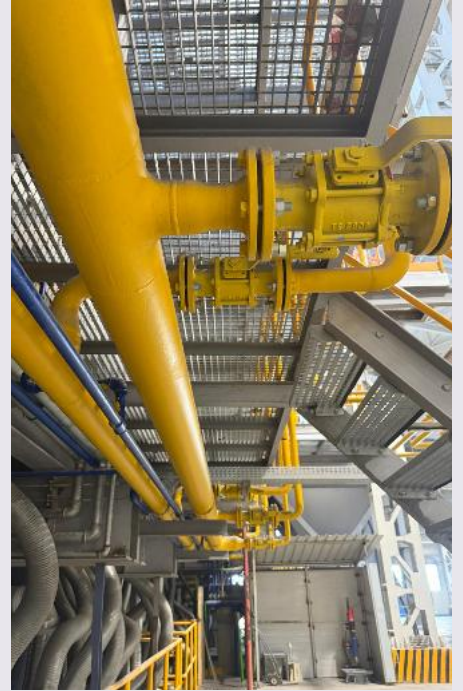
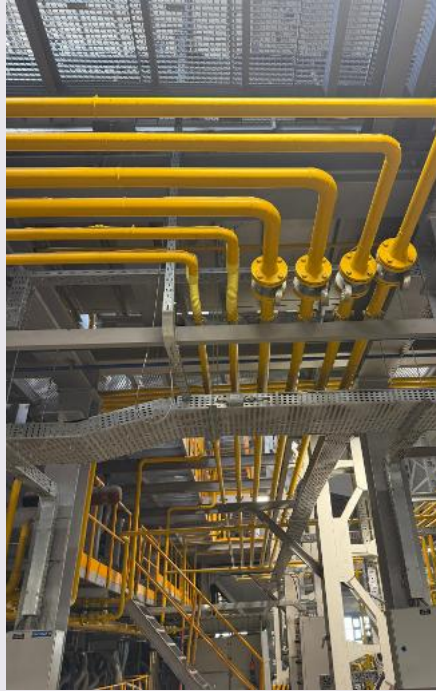




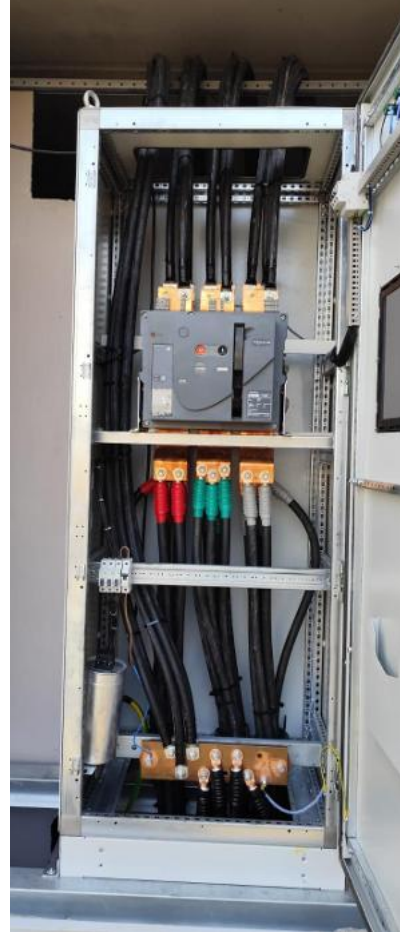




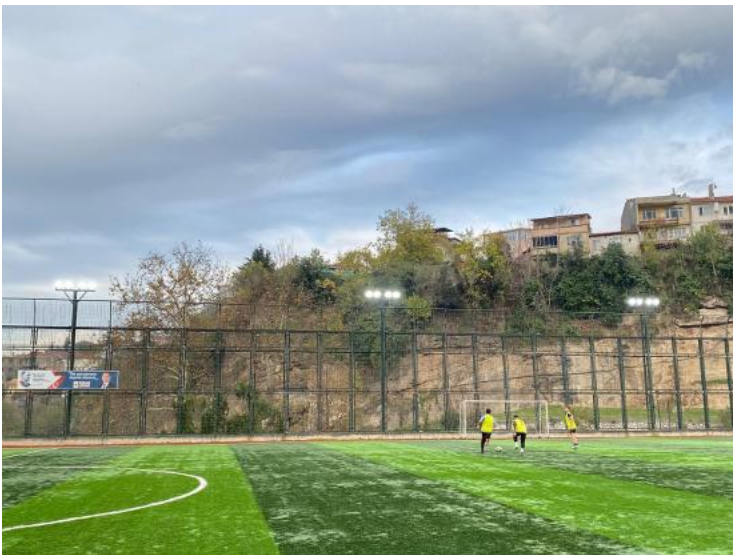
WE PROVIDE AIR, WATER, AND GAS INSTALLATION SOLUTIONS FOR INDUSTRIAL FACILITIES. WE STRENGTHEN YOUR FACTORY'S INFRASTRUCTURE WITH SAFE, EFFICIENT, AND LONG-LASTING SYSTEMS.







OUTDOOR LIGHTING PROJECTS





EA OTOMASYON
ELEKTRİK
ELEKTRONİK
MÜHENDİSLİK

*Alaaddinbey Mah.
640. Sk. No:2B
Nilüfer/Bursa*

Contact : 0224 411 16 35

*web: <https://www.eamuhendislik.com.tr/>
email : eamuhendislik@eamuhendislik.com.tr*